



Installation Instructions for "Out of Sight" Ladders

Form 12.105

ASSEMBLY INFORMATION

1. Check parts against parts list.
2. Read Instructions completely before starting assembly.
3. NOTE: This product uses locknuts for a secure assembly. Locknuts thread on harder than conventional nuts and require a screwdriver and wrench for attachment.

Refer to Fig. 1

1. Choose the most suitable side of your transom platform for mounting the ladder. When mounting, locate a place where the ladder will not interfere with the turning of the motor or be excessively close to the propeller of your boat.
2. Place the ladder under the deck where it will be mounted. Make sure the area is flat and has enough space to facilitate proper operation. Position it so that when stowed it will protrude a minimum of 1/2" from the deck. Mark this general area.

Refer to Fig. 2

3. Slide one mounting bracket (A) onto the main ladder vertical as shown. Make sure it touches the slide bracket (B), this will insure the ladder will store exactly as positioned. NOTE: Slide bracket (B) is only supplied on 2 & 3 step model ladders.
4. Position the mounting bracket (A) with the ladder in the area to be mounted as determined in Step 2. Mark the bracket's four mounting holes onto the deck surface. Check the operation of the ladder before drilling the holes for the following: A) When in "up" position, ladder is stowed without hitting the transom. B) When in "down" position, the ladder will angle out sufficiently for easy ascent. C) The ladder will slide out; there is no deck trim or moulding that will impede its operation. If this occurs, make a shim under the mounting brackets that will bring the ladder down far enough for proper operation.*
5. Drill the four marked holes with 5/16" drill bit. NOTE: It is recommended to through bolt this ladder for best results.

*NOTE: This might be necessary for pontoon boat installations.

Parts List "Out of Sight" Ladder

Ref. Letter	Factory Part No.	No. Req.	Description
A	50.394	2	Large mounting bracket
C	06.135	2	Poly sleeve
D	50.392	2	Backing plate
E	03.085	8	1/4-20 x 2 1/4" machine screw
F	03.221	8	1/4-20 locknut
G	06.038	1	Securing strap
H	03.114	1	#8x1" s.s. screw

FIG. 1

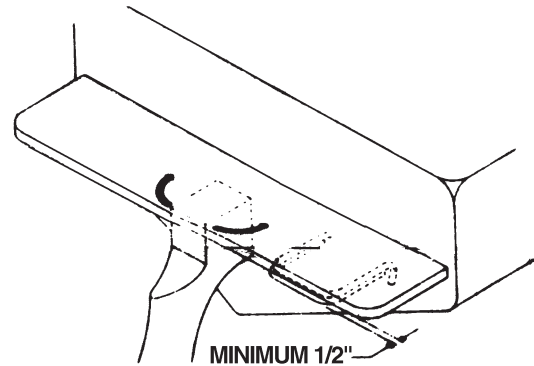
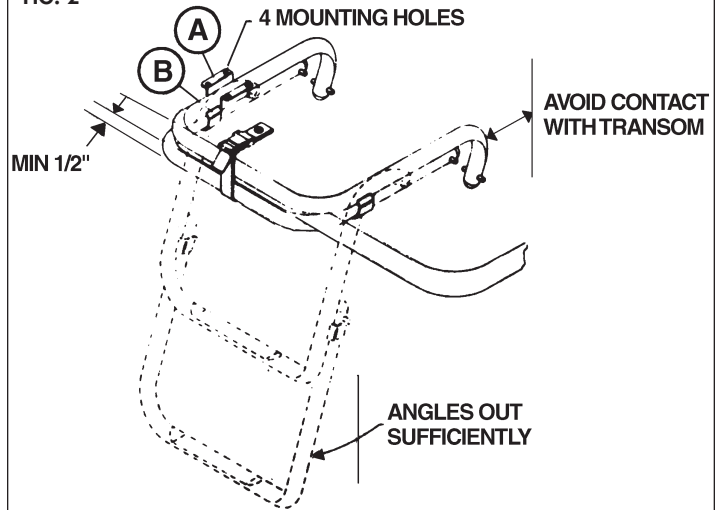


FIG. 2



(over)

Refer to Fig. 3

6. Mount the ladder in place on one side by placing the poly sleeve (C) into the mounting bracket (A), putting the ladder into the bracket (A), and placing it up to the drilled holes. Put the backing plate (D) on the deck and insert mounting screws (E). Secure ladder in place with locknuts (F).

Refer to Fig. 4

7. Slide the other mounting bracket (A) onto the ladder vertical as before. Center the ladder tubes within the brackets and make sure they are parallel to each other. Mark the hole locations of this bracket onto the deck. Drill these holes and secure in place as in Step 6.

Refer to Fig. 5

8. Decide where you want to mount the strap assembly (G) on the boat. Take the strap and fold it as illustrated. Fasten the strap in place with screw (H). Secure the ladder in place as shown.

NOTE: After securing the ladder with the strap, gently tug on the tail of the strap to tighten ladder when underway.

Refer to Fig. 2

Operation

To Lower Ladder Unhook the strap assembly, slide out the ladder extensions, the ladder will pivot down and lock in place.

To Raise Ladder Grab the ladder vertical closest to the deck, pull it up while rotating it parallel to the mounting surface. Slide it under the deck, now slide in the additional sections. Secure in place with strap assembly.

CAUTION: DO NOT USE LADDER WHEN BOAT'S MOTOR IS RUNNING

STAINLESS STEEL CARE AND MAINTENANCE

TO ASSURE A CONTINUED BRIGHT FINISH, PROPER CARE SUCH AS REGULAR FRESH WATER RINSING AND PERIODIC CLEANING WITH A MILD ABRASIVE CLEANER SHOULD BE DONE. WE USE ONLY TOP QUALITY 304 AND 316 ALLOY IN THE STAINLESS STEEL PRODUCTS WE MANUFACTURE. MANY FACTORS, DEPENDING ON LOCAL CONDITIONS MAY CONTRIBUTE TO MINOR CORROSION. STAINLESS, LIKE ANY OTHER METAL, IS **NOT** COMPLETELY FREE FROM CORROSION ATTACK.

FIG. 3

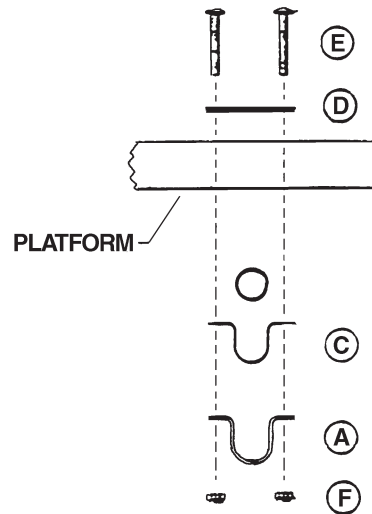


FIG. 4

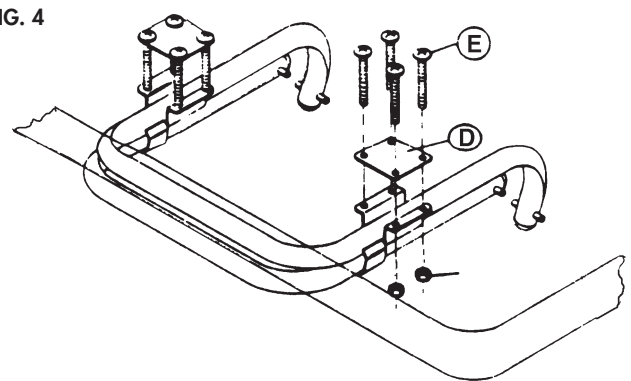


FIG. 5

